

Electronic Appendix

AERMOD

Air Dispersion Modeling

Electronic Appendix

Air Concentration Maps for Year 2009

Particulates

0.3-km² Resolution

0-m Release Height



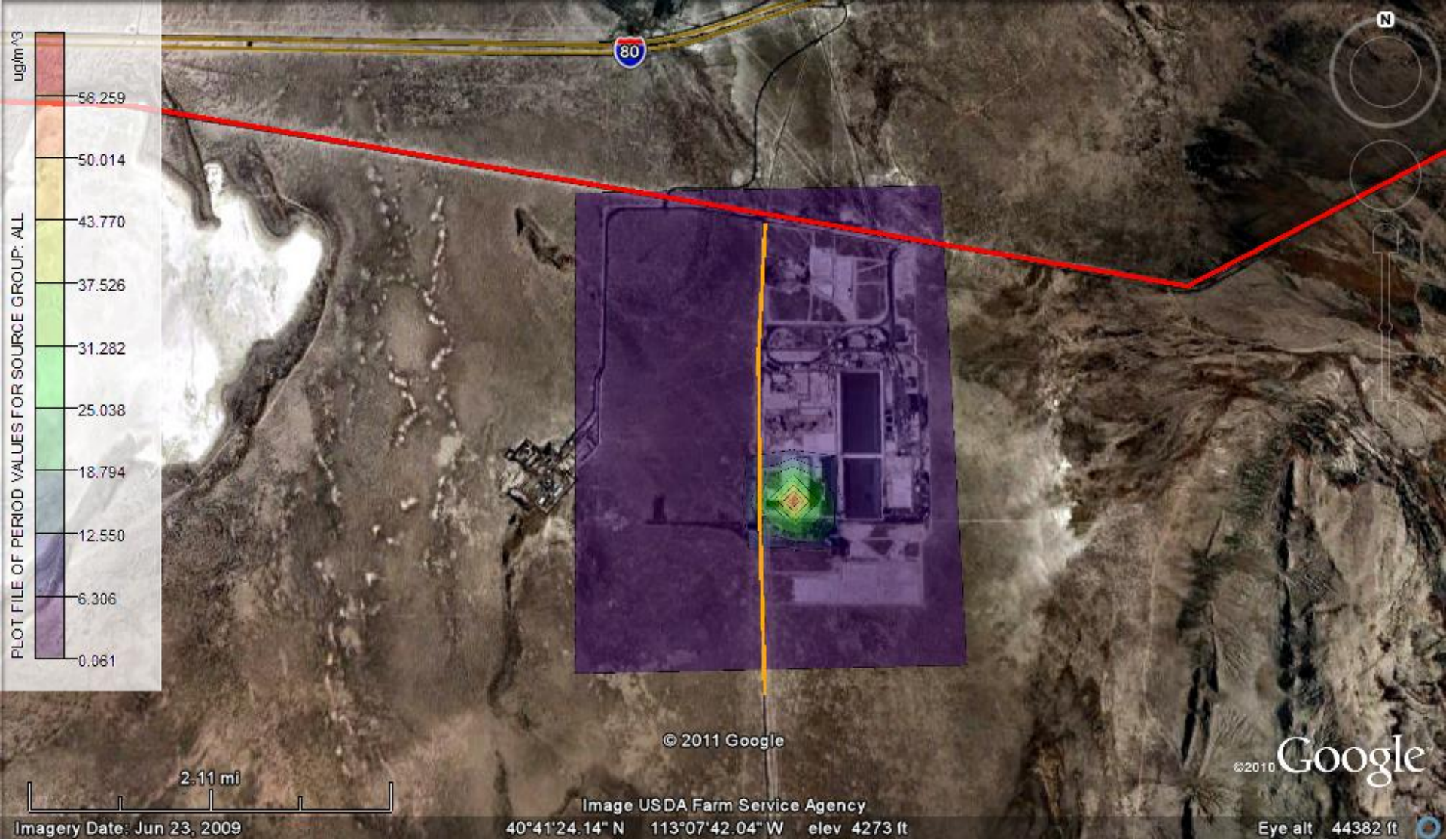
AERMOD Air concentration ($\mu\text{g}/\text{m}^3$)
0% of particulate fraction between 0-2.5 microns
0.3 km^2 resolution, 0-m release height, 0.25 g/sec emission rate



AERMOD Air concentration ($\mu\text{g}/\text{m}^3$)
5% of particulate fraction between 0-2.5 microns
0.3 km^2 resolution, 0-m release height, 0.25 g/sec emission rate



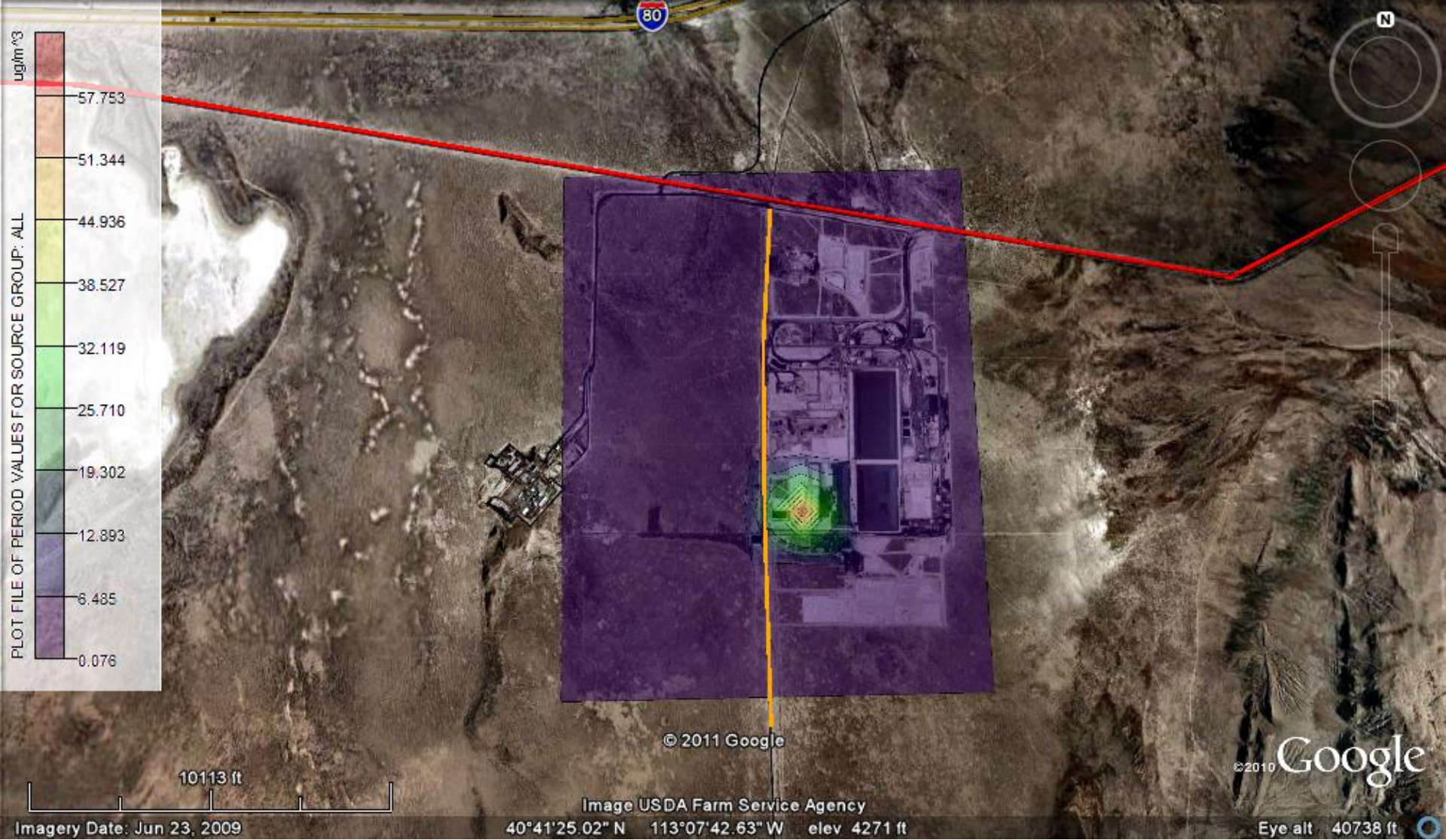
AERMOD Air concentration ($\mu\text{g}/\text{m}^3$)
10% of particulate fraction between 0-2.5 microns
0.3 km^2 resolution, 0-m release height, 0.25 g/sec emission rate



AERMOD Air concentration ($\mu\text{g}/\text{m}^3$)
20% of particulate fraction between 0-2.5 microns
0.3 km^2 resolution, 0-m release height, 0.25 g/sec emission rate



AERMOD Air concentration ($\mu\text{g}/\text{m}^3$)
40% of particulate fraction between 0-2.5 microns
0.3 km^2 resolution, 0-m release height, 0.25 g/sec emission rate



AERMOD Air concentration (ug/m³)
60% of particulate fraction between 0-2.5 microns
0.3 km² resolution, 0-m release height, 0.25 g/sec emission rate



AERMOD Air concentration ($\mu\text{g}/\text{m}^3$)
80% of particulate fraction between 0-2.5 microns
0.3 km^2 resolution, 0-m release height, 0.25 g/sec emission rate



AERMOD Air concentration ($\mu\text{g}/\text{m}^3$)
100% of particulate fraction between 0-2.5 microns
0.3 km^2 resolution, 0-m release height, 0.25 g/sec emission rate

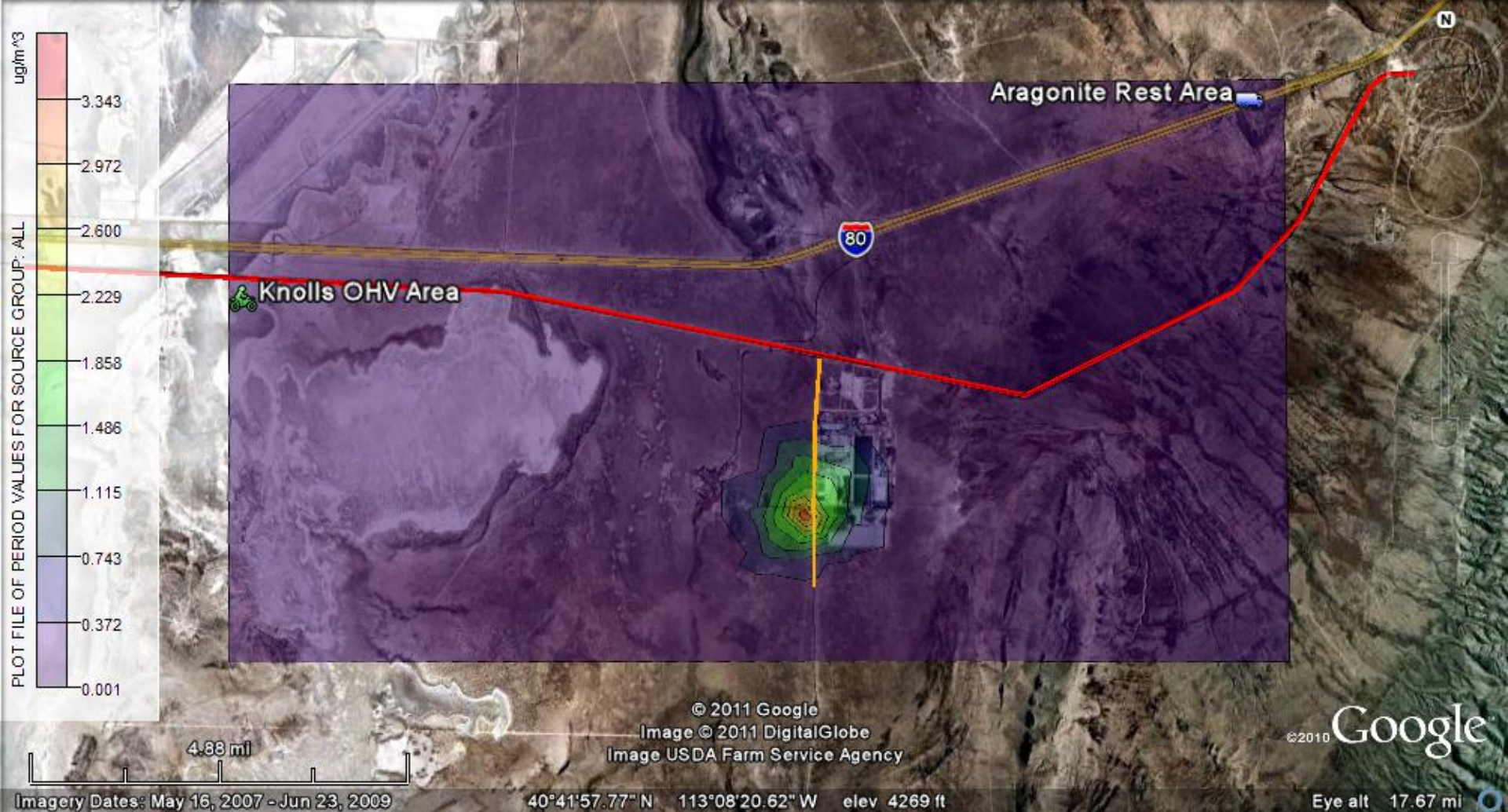
Electronic Appendix

Air Concentration Maps for Year 2009

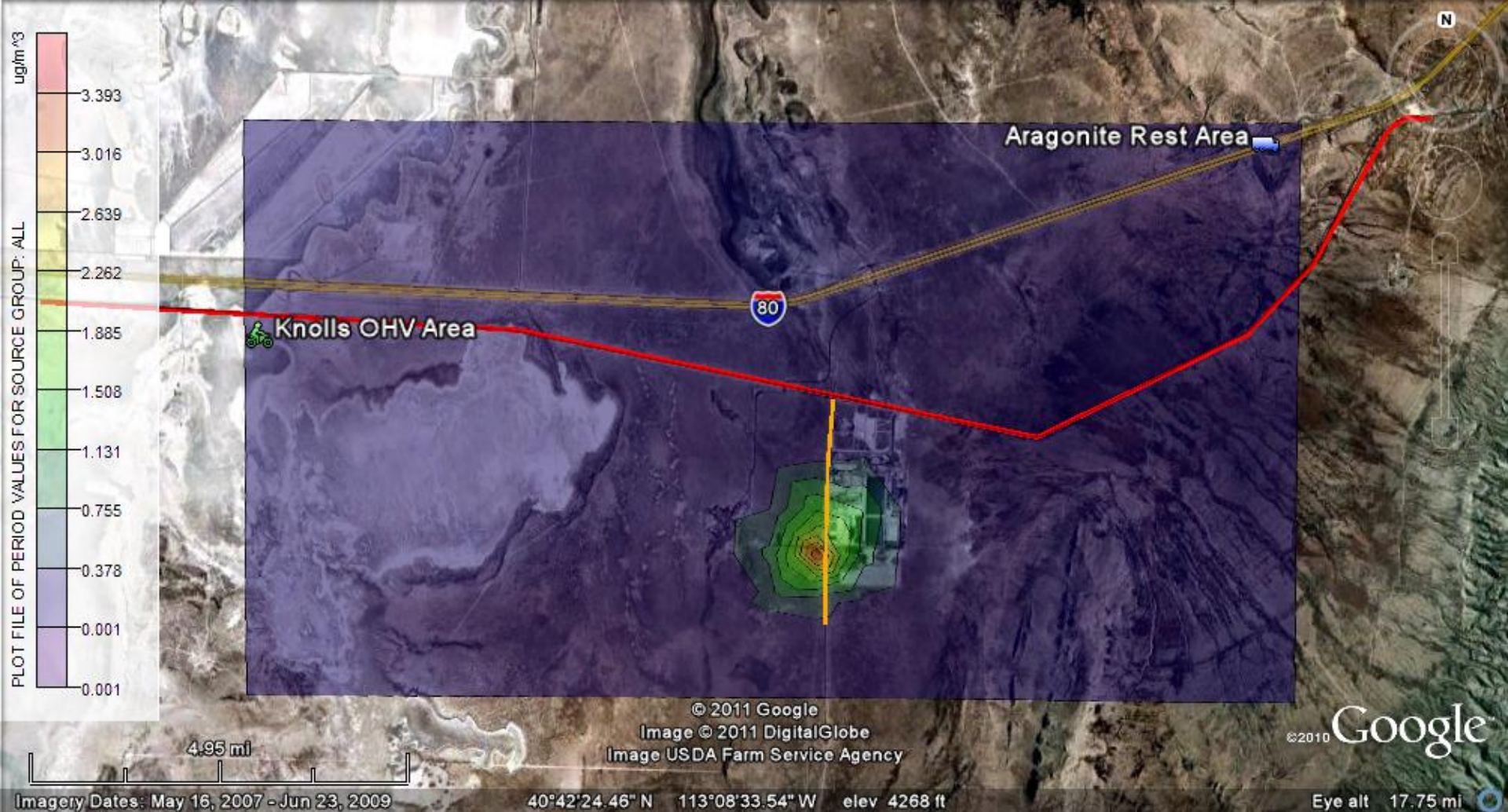
Particulates

1-km² Resolution

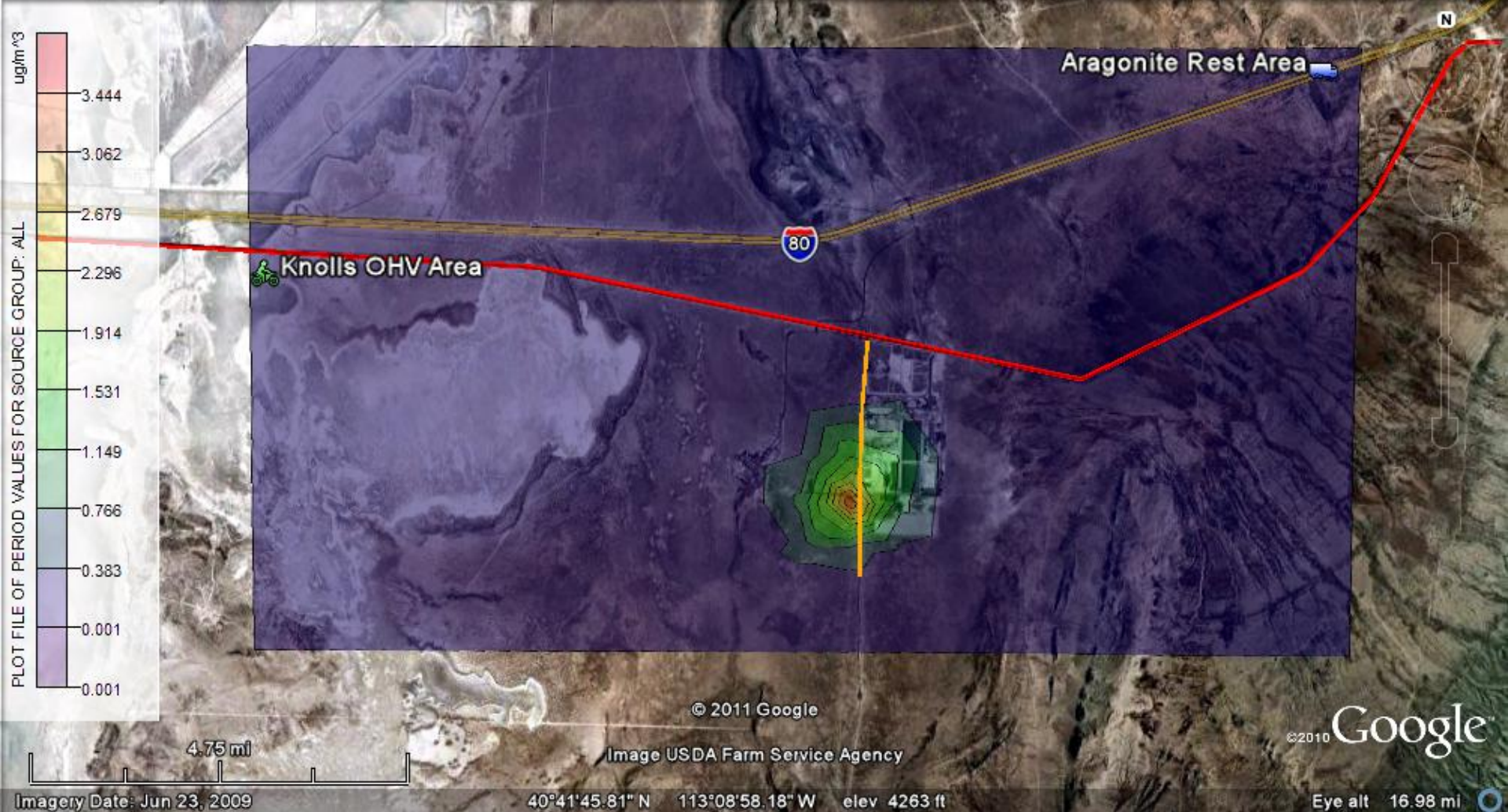
15-m Release Height



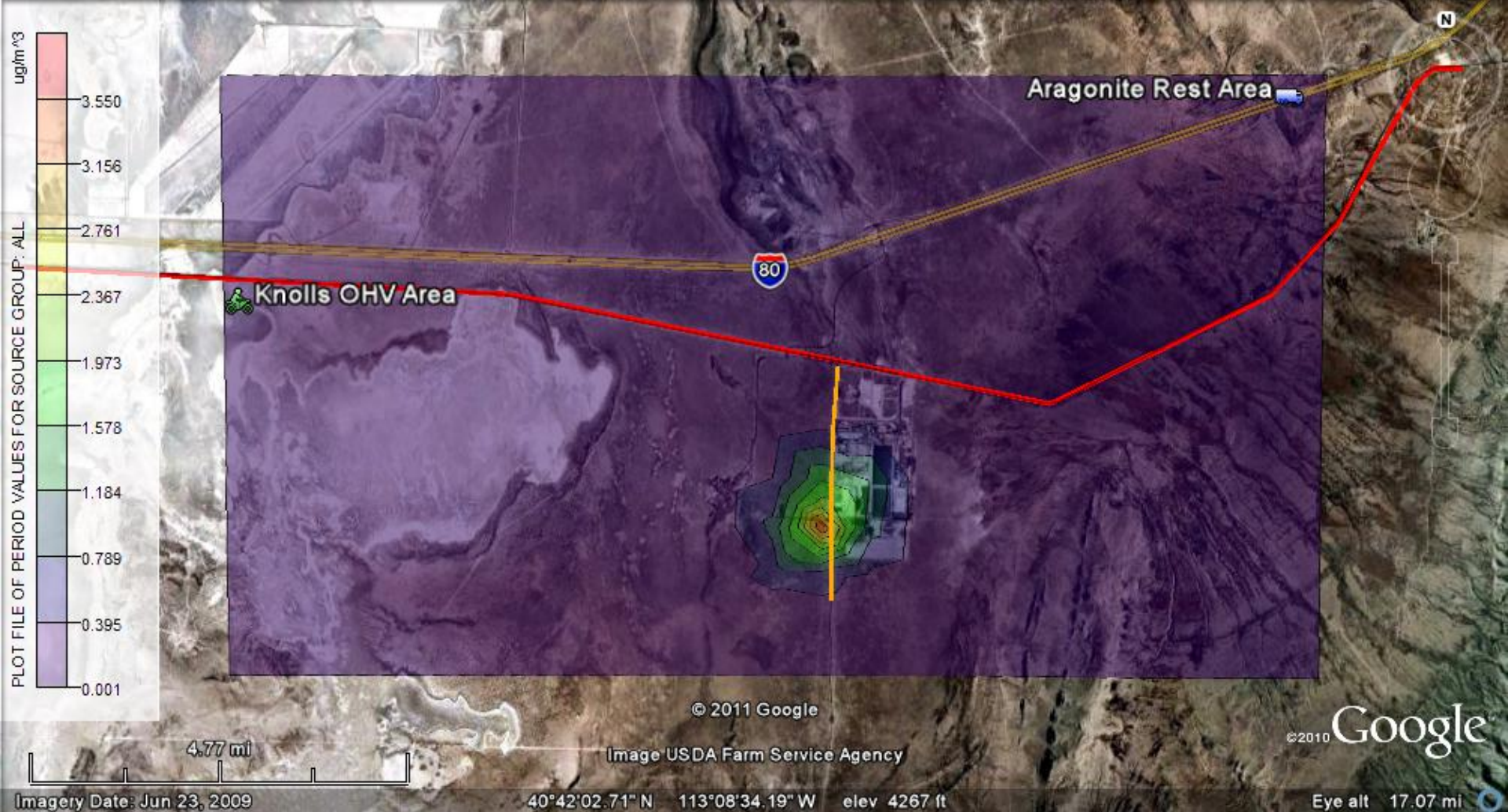
AERMOD Air concentration ($\mu\text{g}/\text{m}^3$)
 0% of particulate fraction between 0-2.5 microns
 1- km^2 resolution, 15-m release height, 0.25 g/sec emission rate



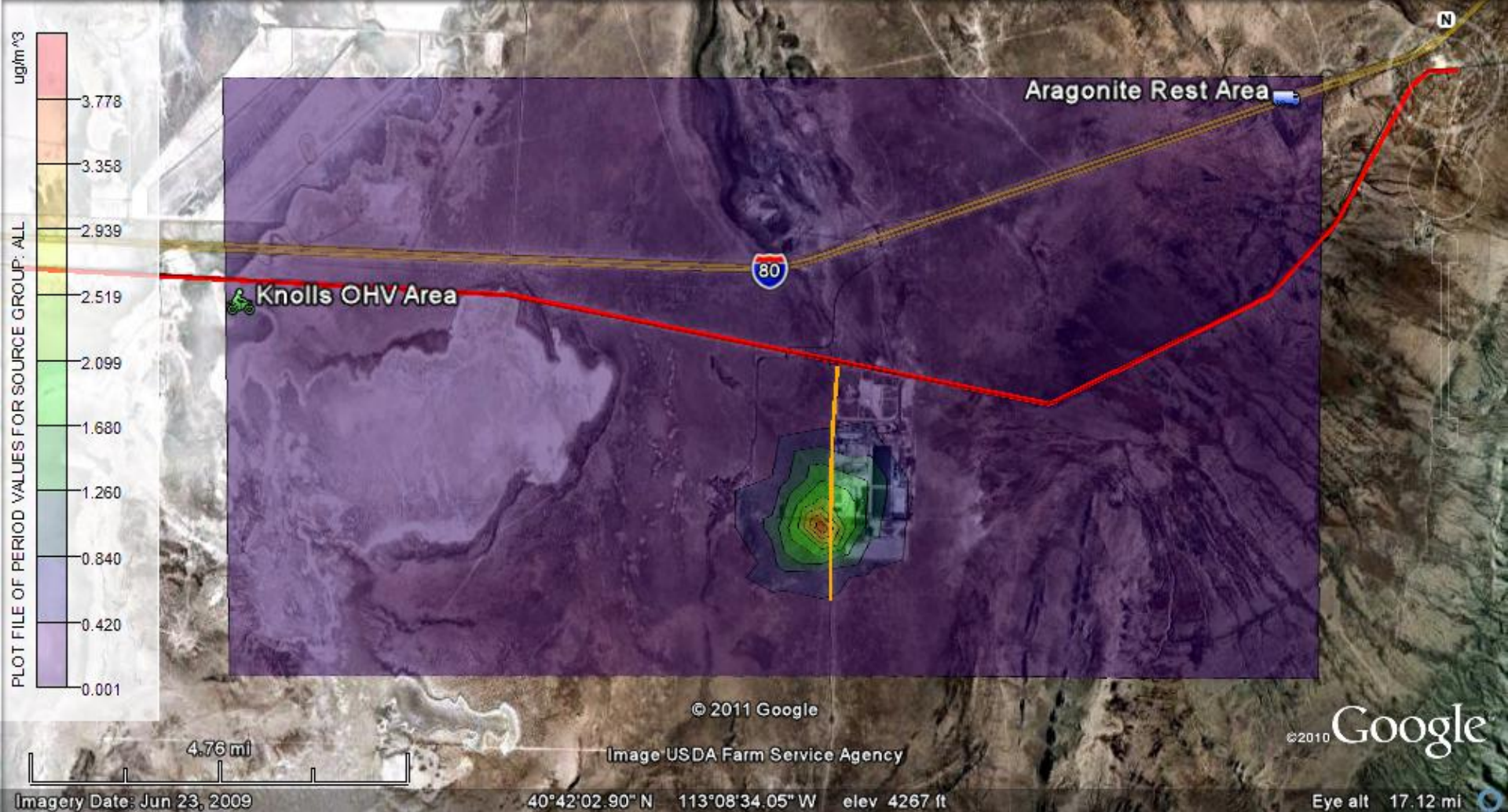
AERMOD Air concentration ($\mu\text{g}/\text{m}^3$)
 5% of particulate fraction between 0-2.5 microns
 1- km^2 resolution, 15-m release height, 0.25 g/sec emission rate



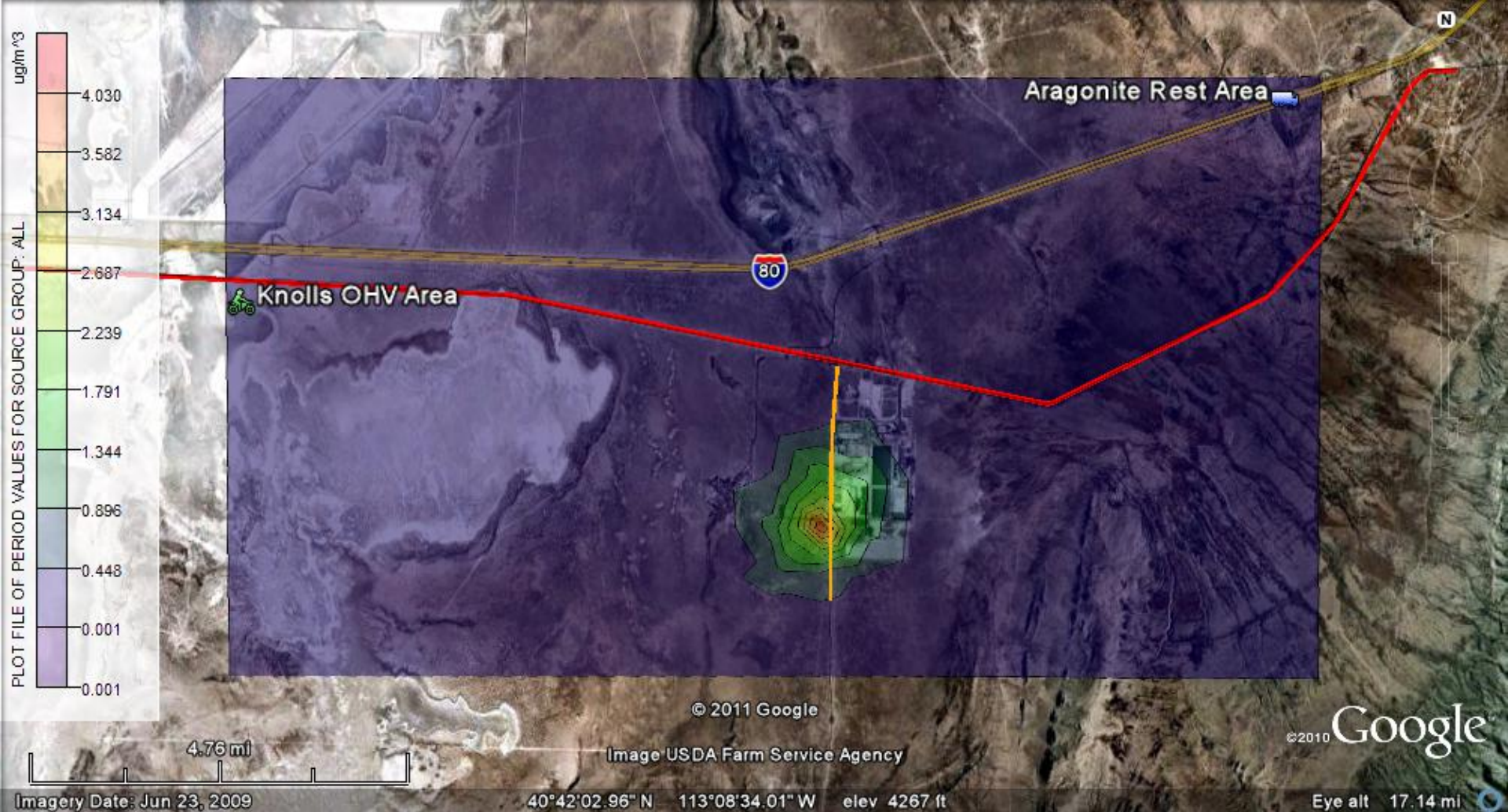
AERMOD Air concentration ($\mu\text{g}/\text{m}^3$)
10% of particulate fraction between 0-2.5 microns
1- km^2 resolution, 15-m release height, 0.25 g/sec emission rate



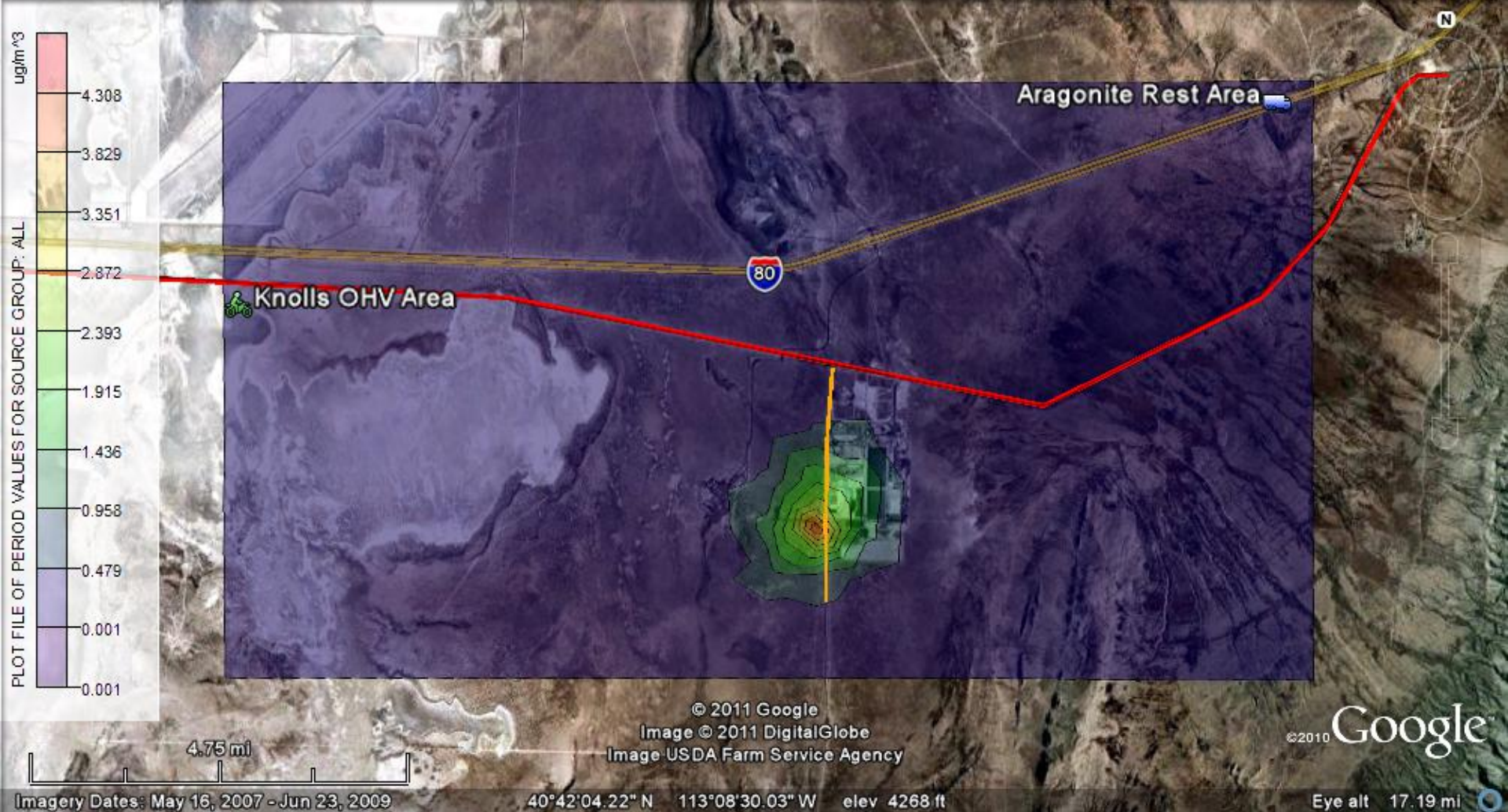
AERMOD Air concentration ($\mu\text{g}/\text{m}^3$)
20% of particulate fraction between 0-2.5 microns
1- km^2 resolution, 15-m release height, 0.25 g/sec emission rate



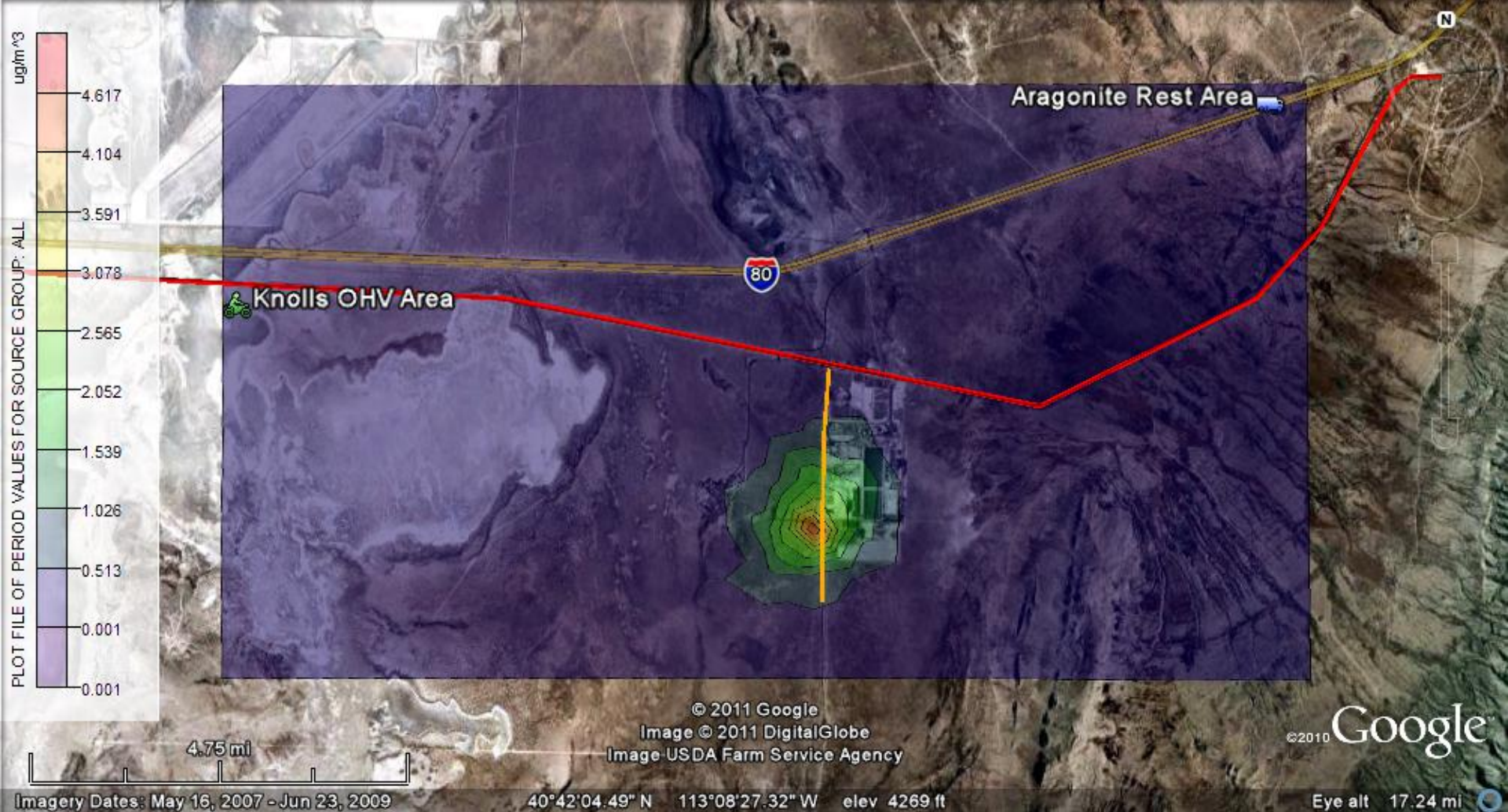
AERMOD Air concentration ($\mu\text{g}/\text{m}^3$)
40% of particulate fraction between 0-2.5 microns
1- km^2 resolution, 15-m release height, 0.25 g/sec emission rate



AERMOD Air concentration ($\mu\text{g}/\text{m}^3$)
60% of particulate fraction between 0-2.5 microns
1- km^2 resolution, 15-m release height, 0.25 g/sec emission rate



AERMOD Air concentration ($\mu\text{g}/\text{m}^3$)
 80% of particulate fraction between 0-2.5 microns
 1- km^2 resolution, 15-m release height, 0.25 g/sec emission rate



AERMOD Air concentration ($\mu\text{g}/\text{m}^3$)
100% of particulate fraction between 0-2.5 microns
1-km² resolution, 15-m release height, 0.25 g/sec emission rate

Electronic Appendix

Air Concentration Maps for Year 2009

Particulates

0.3-km² Resolution

0-m Release Height



AERMOD Air concentration (ug/m³)
0.3-km² resolution, 0-m release height

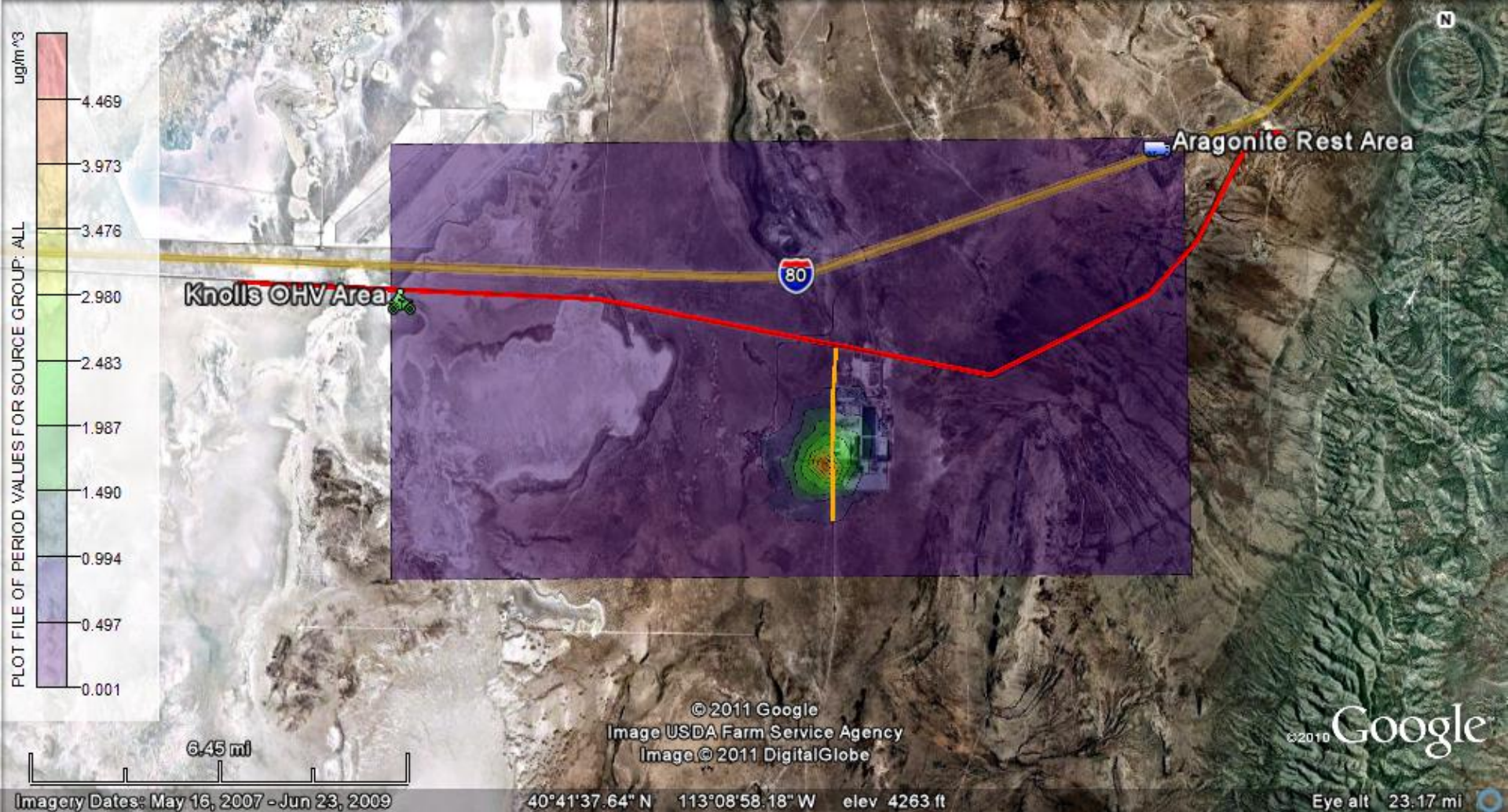
Electronic Appendix

Air Concentration Maps for Year 2009

Radon Gas

1-km² Resolution

15-m release height



AERMOD Air concentration (ug/m³)
1-km² resolution, 15-m release height